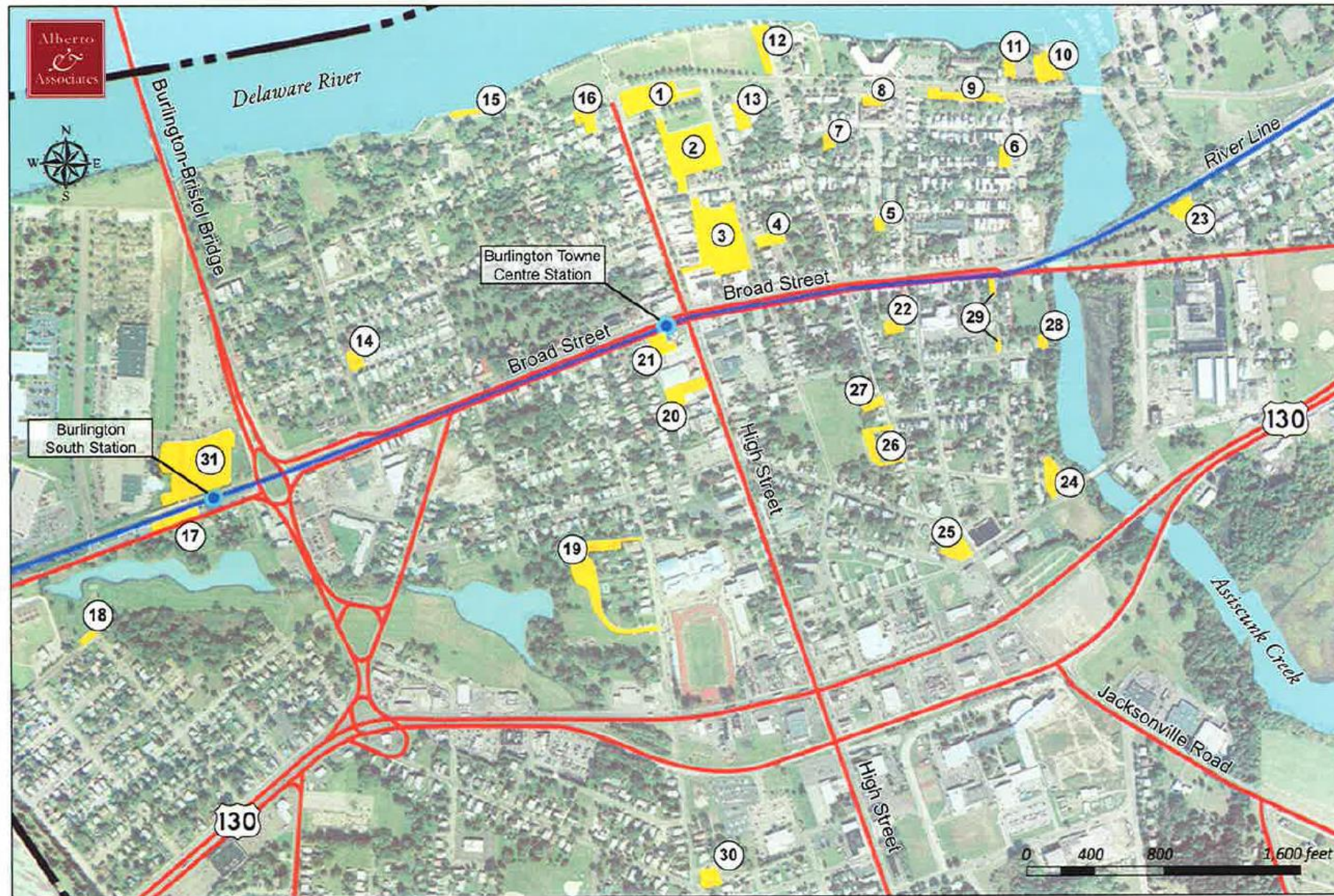


Public Parking Areas/2010 City of Burlington Master Plan



Lot #	Location / Description	Total Spaces
1	Pearl Boulevard – Gravel Lot (temporary)	150 (temporary)
2	200 Block of High Street	198
3	300 Block of High Street	234
4	Barclay & Stacy Streets	30
5	300 Block of York Street, alley	10 (est)
6	E. Union & Tatham Streets	24
7	Quaker School House – Penn Street	13
8	Senior Apartments at former West Electronics Building *	13
9	300 Block of Pearl Street	40
10	City Boat Ramp	26 + 11 trailer
11	Tatham Street @ Riverfront Promenade	28
12	York Street @ Riverfront Promenade	30
13	Stacy Court	25
14	Conover & Ellis Streets	20
15	Riverbank Street @ Riverfront Promenade	30
16	Between W. Pearl & Riverbank Streets	33
17	W. Broad Street at JFK Park and Burlington South Station	21
18	Highland Avenue at JFK Park	13
19	Keegan Center / JFK Park, Wood Street	85 (est)
20	Herman T. Costello Lyceum Hall Arts Center	40 (est)
21	Tourism Center (former Alexander Inn), W. Broad Street*	22
22	Laumaster Street	19
23	Bordentown & E. Broad Streets	31
24	Mitchell Court	31
25	Federal, Wall & Belmont Streets	41
26	500 Block of York Street, rear	30
27	500 Block of York Street, front	26
28	Clarkson Street at Assiscunk Creek	18
29	Earl Street Lots	11
30	Ella Avenue	10
31	NJ Transit – Burlington South Park/Ride	368

*Subject to agreements with Pennrose Properties, Inc.