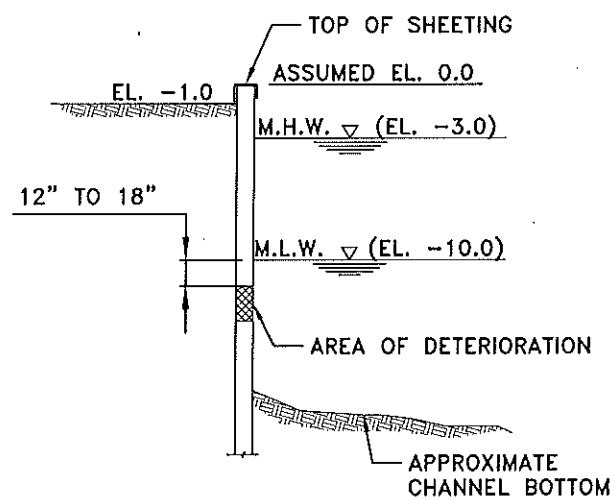


PLAN VIEW
SCALE: N.T.S.

SOUNDING TABLE	
STATION	CHANNEL BOTTOM ELEVATIONS
0	-11.7
1	-11.8
2	-11.9
3	-12.0
4	-12.4
5	-12.7
6	-13.0
7	-12.6
8	-16.3
9	-18.2
10	-16.3
11	-16.8
12	-15.8
13	-14.7
14	-14.0
15	-13.9
16	-14.1
17	-14.7
18	-15.9



TYPICAL SECTION
SCALE: N.T.S.

DETERIORATION TABLE			
DETERIORATION TYPE	STATIONS	ELEVATIONS	DESCRIPTION
TYPICAL	ALL	-6.0 TO -9.0	LIGHT TO MODERATE SURFACE CORROSION WITH PAINT LOSS
TYPICAL	ALL	-10 TO -11.5	LIGHT NODULES OF MIC DETECTED (UP TO 3/4"Ø WITH NO SECTION LOSS)
TYPE 1	1 TO 6 & 12 TO 18	-11.5 TO -12.5	BAND OF 3/4" TO 1.5"Ø HOLES IN THE SHEETING
TYPE 2	6 TO 12	-11.5 TO -13.0	HOLES IN SHEETING TYPICALLY 6" TO 8"Ø WITH SIGNIFICANT LOSS OF FILL

GENERAL NOTES:

1. THE INSPECTION WAS PERFORMED IN JANUARY 2018.
2. THE CHANNEL BOTTOM ELEVATIONS SHOWN IN THE SOUNDING TABLE WERE REFERENCED FROM THE TOP OF THE SHEETING (ASSUMED EL. 0.0) TO THE CHANNEL BOTTOM AT THE STATIONS MARKED IN THE FIELD BY ALAIMO.
3. TYPICAL DETERIORATION WAS NOTED BETWEEN M.H.W. AND JUST BELOW THE M.L.W. AS SHOWN ON THE TABLE.
4. HEAVY DETERIORATION WAS NOTED BELOW THE M.L.W. WITH 100% SECTION LOSS AND LOSS OF FILL.

INSPECTION FINDINGS

BURLINGTON CITY PROMENADE
ALONG DELAWARE RIVER
BURLINGTON CITY, NJ

WJ W.J. Castle PE *Consulting Engineers*
& Associates
1345 ROUTE 38 WEST
HAINESPORT, NJ 08036

SCALE	DRAWN BY	CHECKED BY	JOB NO.	DATE	DRAWING No.
AS SHOWN	C.A.D.	W.J.C.	10-2424-19	01/21/19	1 OF 1