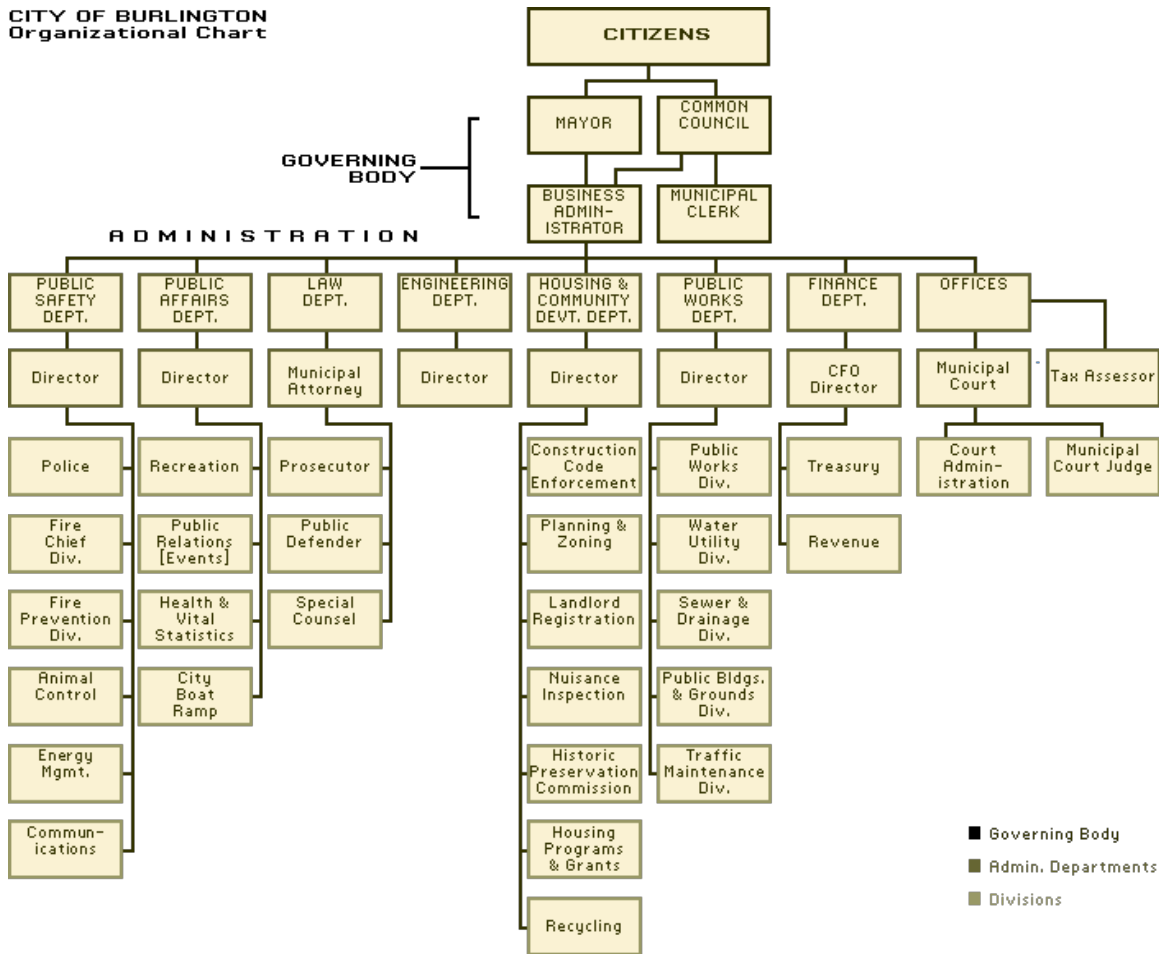


CITY OF BURLINGTON GOVERNING BODY ORGANIZATION CHART

CITY OF BURLINGTON
Organizational Chart



The City of Burlington operates in accordance with the Mayor-Council form of government, as authorized in the Optional Municipal Charter Law (NJSA 40:69A).

The [Common Council](#) consists of seven (7) members, three at-large Councilpersons and one from each of the four wards, who shall serve for a term of four years.

The [Mayor](#) is the chief executive of the municipality, while the legislative powers of the City are exercised by the Common Council. Various boards, committees, and departments comprise other areas of the City's government.

The Mayor appoints the City [Business Administrator](#) to administer the budget, centralized purchasing and personnel.

Common Council appoints the [Municipal Clerk](#) to many responsibilities. The Municipal Clerk serves as secretary to the Common Council, the Governing Body and the Municipal Corporation; Chief Administrative Officer of all Elections; Chief Registrar of Voters and issues various Permits.